

Gold Nanorods as Novel Nonbleaching Plasmon-Based Sensors for Molecular Orientations and Local Refractive Index Changes

nanobiotechnology
INSTITUTE FOR
PHYSICAL CHEMISTRY group

JOHANNES
GUTENBERG
UNIVERSITÄT
MAINZ

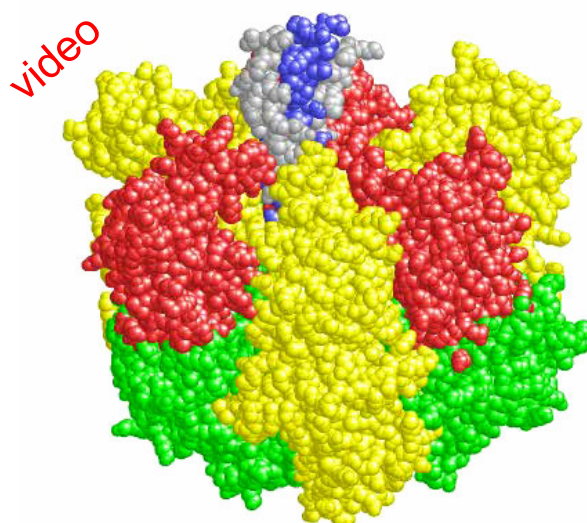
- Jan Becker
- Carsten Sönnichsen

JOHANNES
GUTENBERG
UNIVERSITÄT
MAINZ

Motivation

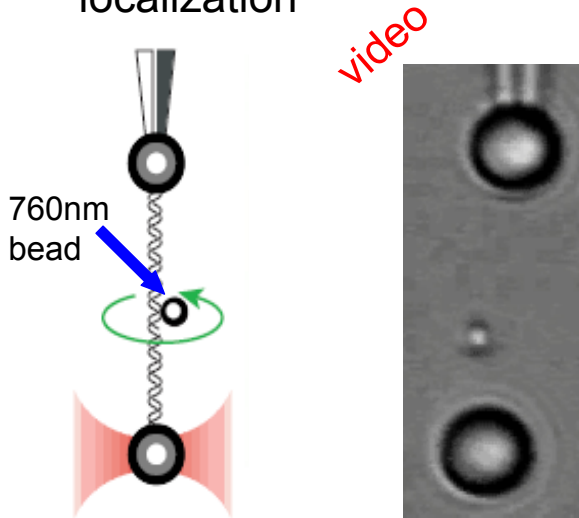
nanobiotechnology
INSTITUTE FOR
PHYSICAL CHEMISTRY group

Observation of single molecule orientation



Nature **396**, 279 (1998)

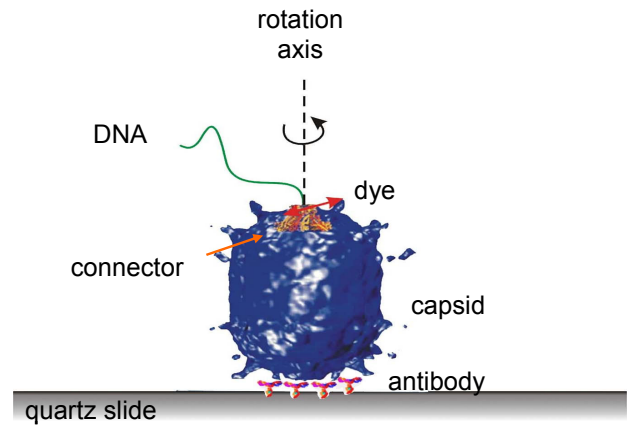
1. Lateral movement of beads 'localization'



Nature **424**, 338-341 (y 2003)

But: large bead
=> large perturbation

2. Fluorescence polarization of single dyes

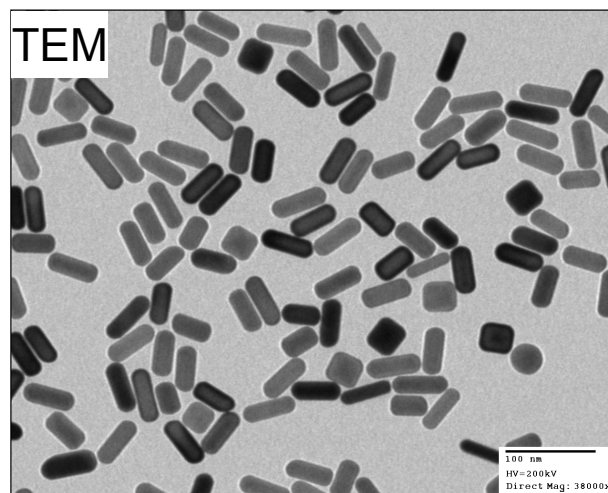


T.Hugel *et al.*, unpublished

But: bleaching & blinking
=> only short time useable

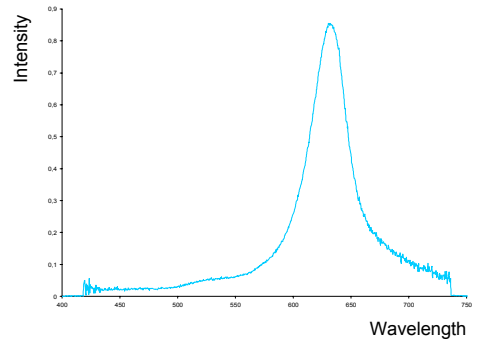
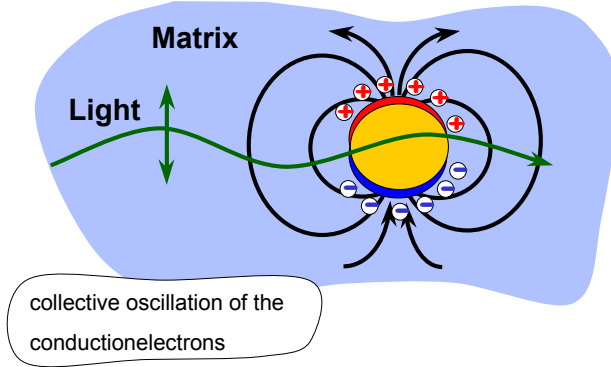
- Produced by chemical synthesis

TEM picture

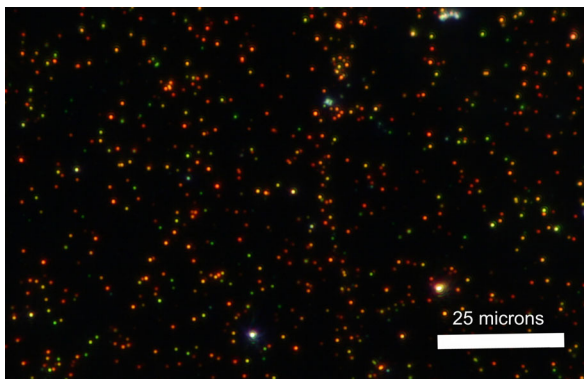
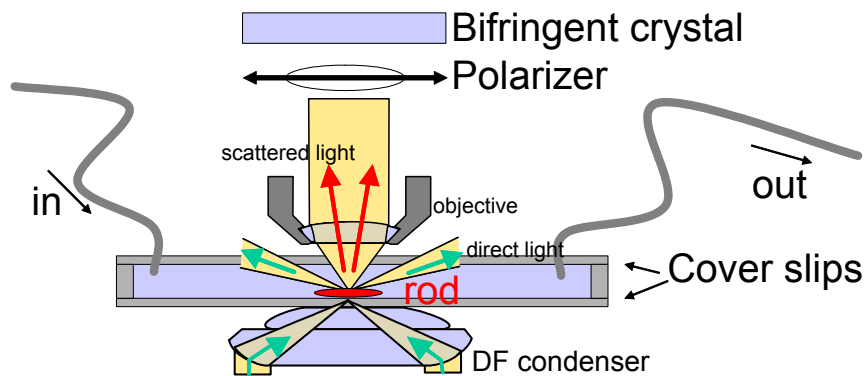
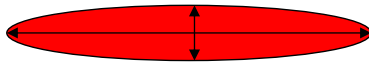


- Size: approximately 20x60 nm => less perturbation
- strong continuous signal

- At eigenfrequency of the collective e⁻ oscillation: strong light scattering

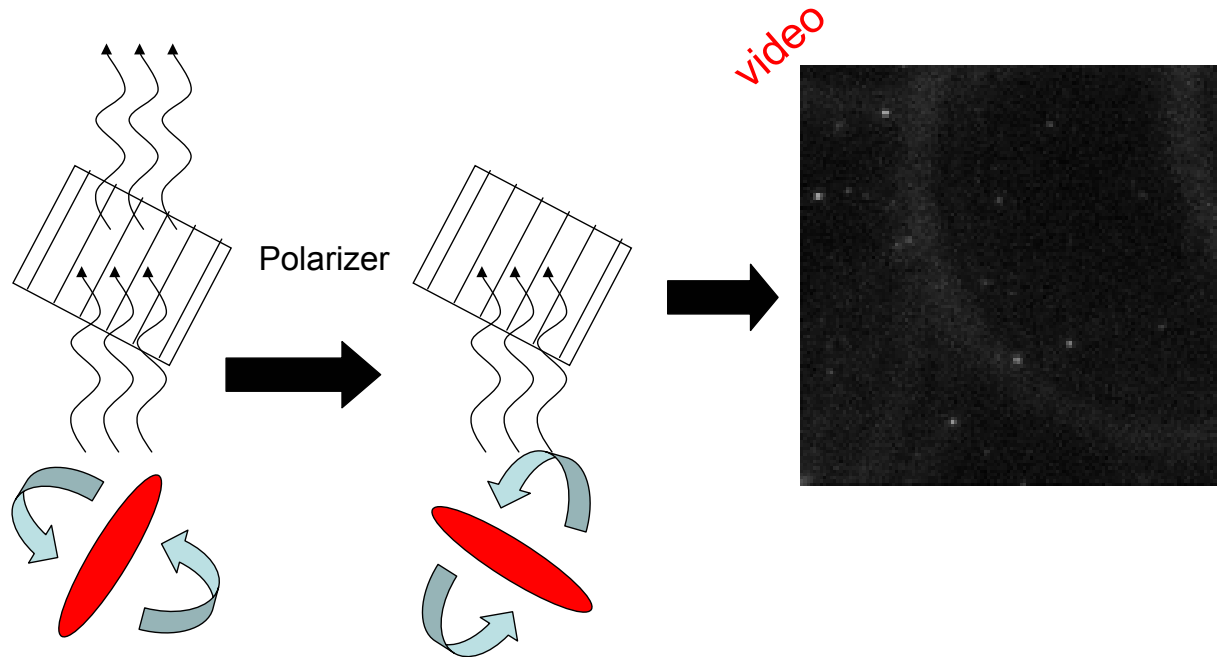


- Rods scatter light polarized along the long axis

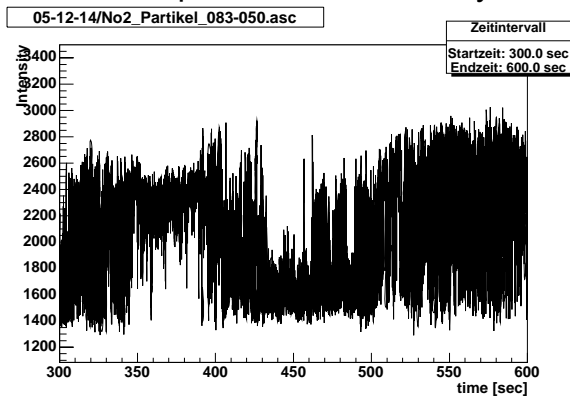


- True color picture
- Every dot is one particle
- The color (≡ resonance wavelength) depends on aspect-ratio, size and shape of the particle

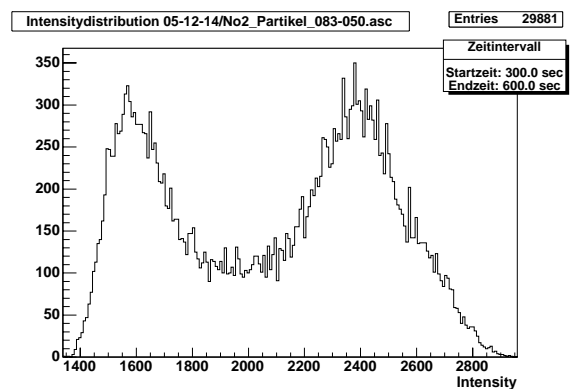
- Polarization along the long axis => rotating particles 'blink' if a polarizer is used



Time-dependence of Intensity

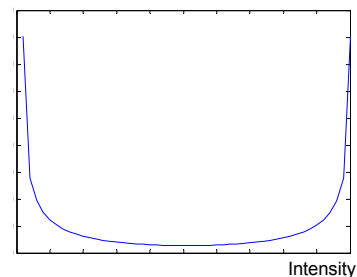


Intensity-distribution



Ideal case

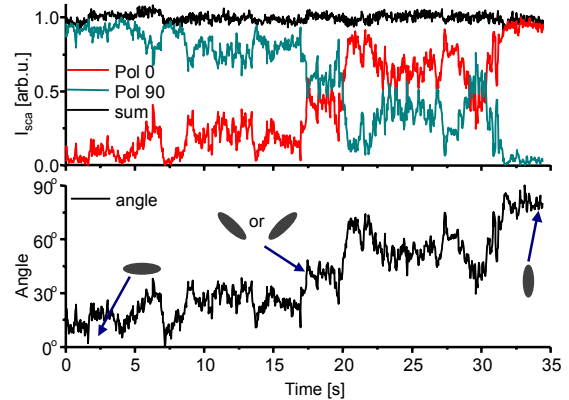
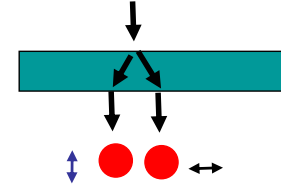
- Intensity $\sim \cos^2(\Theta)$
- If Θ is uniformly distributed



=> Measurement shows Brownian rotation



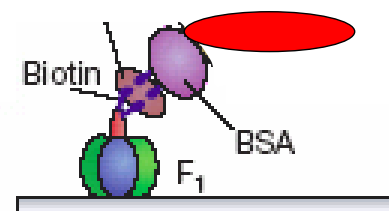
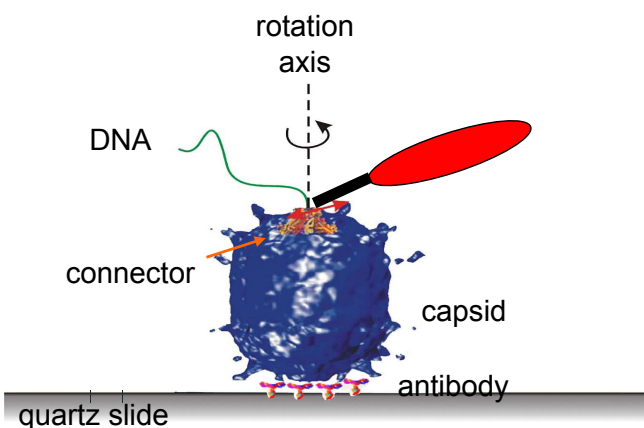
Birefringent crystal



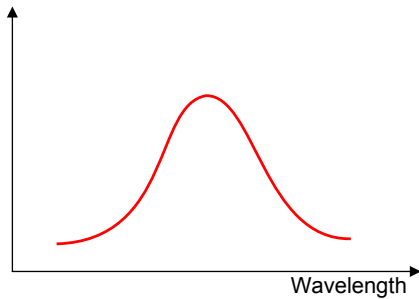
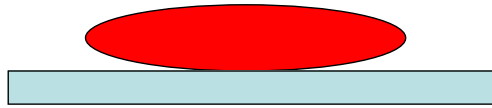
Nano Lett. 5, 301 (2005)

Future Work

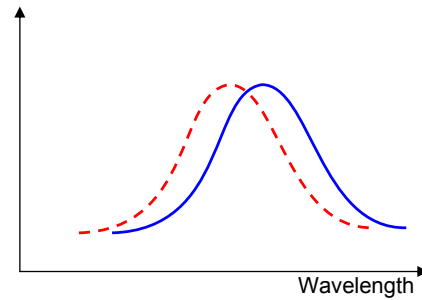
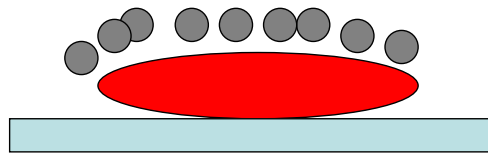
- Functionalization of rods
- Attachment of biomolecules
- Watch dynamics



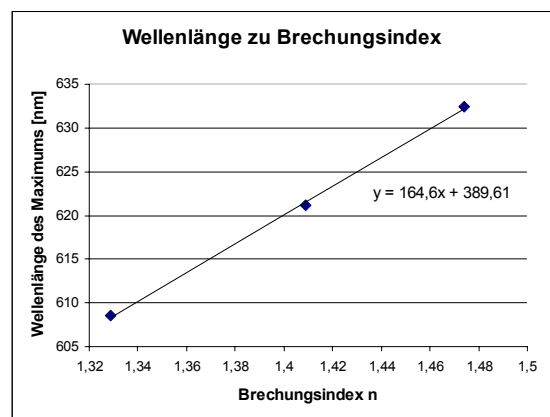
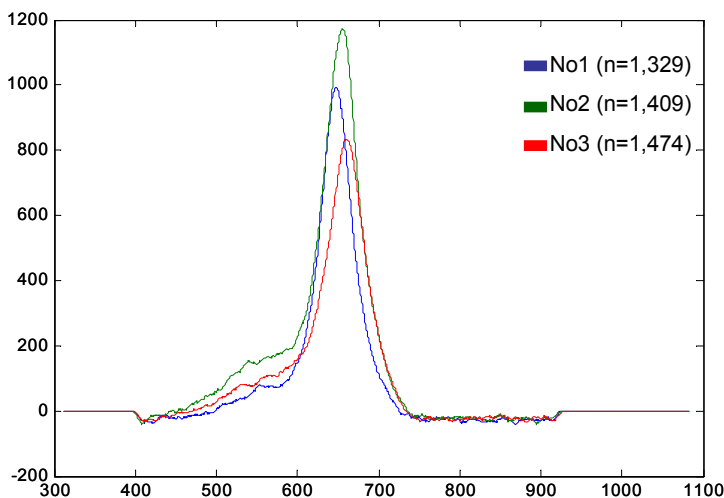
Refractive Index n_1



Refractive Index $n_2 > n_1$



=> Plasmon resonance wavelength shift



Linear Progression

=> Gold rods can be used as refractive index sensors

➤ Göran Hamann

➤ Andreas Kurz

➤ Sebastien Pierrat

➤ Valerie Reuss

➤ Olaf Schubert

➤ Carsten Sönnichsen

Sponsored by:



Emmy Noether Programm